



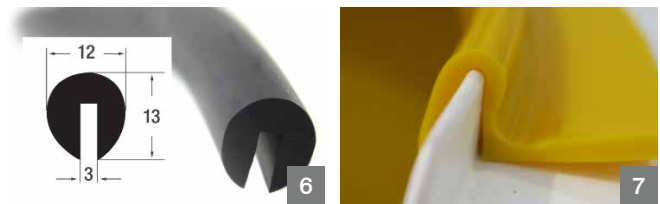
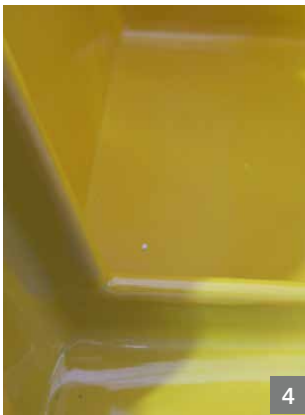
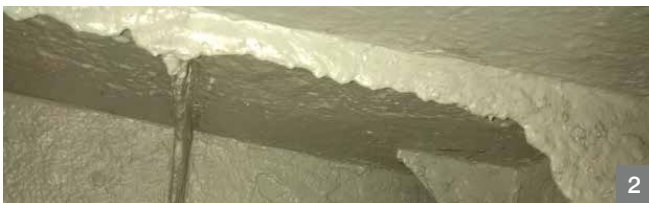
Tank-Inliners (double hull system)

MetaLine 700 – Corrosion protection for black- and graywater tanks

Non-bonding, rubberlike tank-inliner. Removable in case of metal repair work. Seamlessly sprayed onto the existing construction from the manhole flange up to the drains creating a fully self-stable, second “rubber-in-metall-tank” compartment. Avoids blasting and painting in confined space areas (Pic. 3).

Applications

- steel tanks
- FRP tanks
- aluminium tanks
- NOT suitable for combustible liquids



Reference

- about 4 mm thick, seamless inliner - sharp tank edges are rounded by profiles (Pic. 6)
- lightweight with about 5 kg/m² additional weight - easy cleaning / desinfectable
- no blasting or mechanical surface preparation required



MetaLine Surface Protection GmbH | DE-71157 Hildrizhausen (Germany) | Robert-Bosch-Str. 5-11
Tel. +49 (0)7034 3100-0 | Fax +49 (0)7034 3100-5 | www.metaline.com | info@metaline.de

Subject to technical modifications! Information and application examples in this document are provided to the best of our knowledge. However, they also apply without guarantee in reference to the exclusive rights of third parties and do not release the user to check the products and processes for their suitability and material tolerance regarding their intended use. We do not assume liability for the application results. Copyright by MetaLine Surface Protection GmbH, DE-71157 Hildrizhausen (1960 - 2020). MetaLine is a registered trademark of our company.