

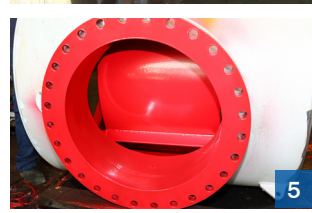
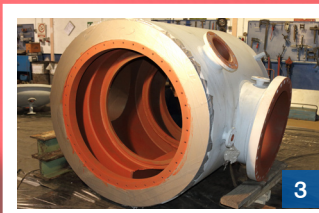
Water Purification

MetaLine Repair and Coating Systems

Filters / Water-Management

MetaLine 785 - Elastomeric rubberlike protective coating answers today's need for highly abused, corrosion impacted steel surfaces. Resists mechanical shocks & pressurized working conditions. A tough, seamless & durable skin to armour stressed filter equipment

- Screening systems
- Steel & stainless steel filter equipment



- 1 Massive filter cartridge located in the port of Barcelona/Spain
- 2 Severe corrosion and complete destruction of the filtering area
- 3 Mechanically repaired and treated with 1 coat of MetaLine 924
- 4 During the spray application of 2,5 mm MetaLine 785 in red
- 5 What a complex shape! Nevertheless successfully coated . . .
- 6 A tough job, finished in time by a spanish MetaLine partner