

Kort Nozzles / Thrusters

Tug boat operation is based on kort nozzle technology. Harsh working conditions demand the maximum from the thrusters!

Tremendous erosion and cavitation are typical problems causing regular repair demand. The basic goal should be to use an efficient protective coating system instead of useless paints or epoxy grouts.

MetaLine 785 is a wear resistant coating to increase the lifetime of thrusters and make their overhaul less time- and cost-intensive

Fields of application:

- Kort Nozzles rings
- Ropeguards



1



2



3



4



5



6



Photos:
Niigata Thrusters on board the
CMM OAXACA (Mexico)

- 1 Elastomeric MetaLine 785 has given new life to the nozzle ring
- 2 Both thrusters showed massive cavitation & erosion damages
- 3 After the reconstruction (welding) with new 13 mm steel plates
- 4 Gritblasting in tropical conditions like the Gulf of Mexico is a challenge. Air-dryers are a must to keep the surface moisture low
- 5 MetaLine 924 as a first borderline corrosion protection treatment
- 6 Ready to leave drydock after 2 days of professional coating work



Jet Drives

Jet drives enable performance parameters which no other maritime form of driving can offer. Due to the high flow velocities, maintenance and spare parts are, however, very time-consuming and hence cost-intensive.

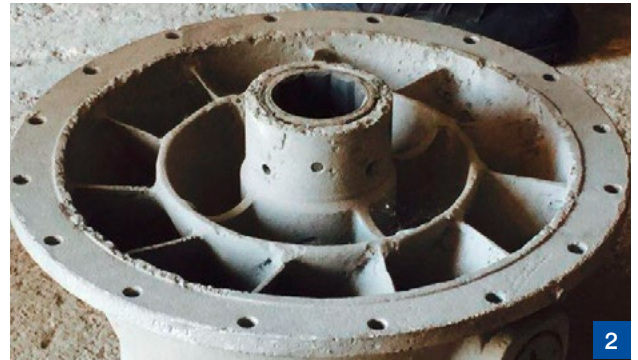
MetaLine elastomeric coatings minimize cavitation effects, prevent corrosion and extend plant lifetime.

Fields of application:

- Stators
- Steering nozzles
- Reverse buckets
- Cavitation plates
- Frames



1



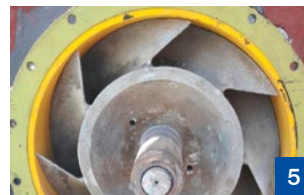
2



3



4



5



6

- 1 Wear (i.e. corrosion and cavitation) on the original lining of the housing
- 2 Pitting corrosion in its most severe form on the stator of a coast patrol vessel
- 3 The viscous film seamlessly covers all metallic areas
- 4 Fits just like a custom-made shoe – no abrasion damage after 3 months of operation
- 5 Anti-fouling properties protect against growth in case of extended non-use
- 6 After inspection – can be reused again without any further repairs necessary

